



Greater  
South East  
**Net Zero Hub**

# **GSENZH Governance**

Hub Board Regional Advisory Board Briefing Pack

26 April 2024



Greater  
South East  
**Net Zero Hub**

# Regional Advisory Boards

# Background

- The GSENZH governance is changing following the closure of LEPs in March
- We are seeking members for Regional Advisory Boards to support us to accelerate net zero in the greater south east region
- We will still have a Hub Board covering all activity but have identified a need for subregional boards to allow our stakeholders to have a bigger role, reflect regional differences and provide the right level of representation and support
- There will be three RABs (see slide 5) and an advisory board for London
- Meetings will be virtual and quarterly with one annual meeting in person
- **Deadline for Eols** is the **21<sup>st</sup> May** and RAB meetings will commence in September

# Regional Advisory Boards Purpose

- Provide representative advice to the Hub Board.
- Make recommendations to the Hub Board about the needs of the potential clients within the regional geographies to inform the functions of the Hub (alongside data analysis).
- Support the Hub delivery by horizon scanning; feeding into future strategy and identifying challenges and support required.
- To secure engagement with representative stakeholders.
- Maintain an up-to-date directory of relevant stakeholders.

# RAB- boundaries



	North West (EEH)	South (Transport for South East)	North East (Transport East)
Ceremonial Counties	6	6	3
County Councils	3	5	3
Unitary Councils	8	10	2
District Councils	20	46	24
Total Councils	31	61	29
Population	4,909,000	7,487,000	3,486,000
North West (EEH)	South (Transport for South East)	North East (Transport East)	
Oxfordshire	Berkshire	Norfolk	
Buckinghamshire	Hampshire	Suffolk	
Hertfordshire	Surrey	Essex	
Bedfordshire	West Sussex		
Northamptonshire	East Sussex		
Cambridgeshire	Kent		

# RAB Size & Composition

Minimum to maximum size (to fulfil each category and take into account number of counties in each RAB area)

- RABs to determine what scale is appropriate / needed given their makeup
- May start small and expand, or fluctuate over time
- Local Authority sector to be single largest, circa 40% of membership
- 50% attendance for quorum

## Minimum 8 (plus 3)

LA & Chair	LA	LA
LA	NHS / FE Institute	Third sector
Academia / Guest	CC Partnership	
Net Zero Programme Lead	Head of Operations, GSE NZH	Hub support Coordinator

## Maximum 18 (plus 3)

LA & Chair	LA	LA
LA	LA	LA
LA	LA	NHS
Third sector	CC Partnership	Academia
Academia	Open / Unallocated	Open / Unallocated
Guest	Guest	Guest
Head of Operations, GSE NZH	Net Zero Programme Lead	Hub support Coordinator

Please see RAB Terms of Reference

# Role Profiles – summary of key features

- **All Members**
- Able to provide Geography and/or Sector representation, supported by relevant Net Zero knowledge and experience
- Be of sufficient seniority, or have equivalent sectoral experience or understanding to provide substantial contributions
- Use their networks / contacts to support Stakeholder engagement aims
- **Chair / Deputy Chair additional elements**
- Lead the planning and coordination of the RAB, including forward planning and agenda setting
- Chairing meetings, ensuring smooth running, involvement of all Members
- Liaison with other RAB Chairs / Deputy-Chairs
- Specified skills: leadership, governance, collaborative & constructive relationship building

# Who we are looking for

- Extensive knowledge of NZ policy landscape, able to share expertise with the RAB & Hub Board to help them make informed decisions.
- Provide insight into how the Hub can improve outcomes to better meet strategic objectives
- Experience in development/delivery of NZ projects.
- Strong networks, helping to build connections with others
- Strategic thinking, ability to analyse a situation and propose solutions to help the Board achieve its goals.
- Provide guidance on the development of new strategies to improve outcomes
- CIVIL Values: Collaboration, Integrity, Vision, Innovation, Leadership



# Appointment Process

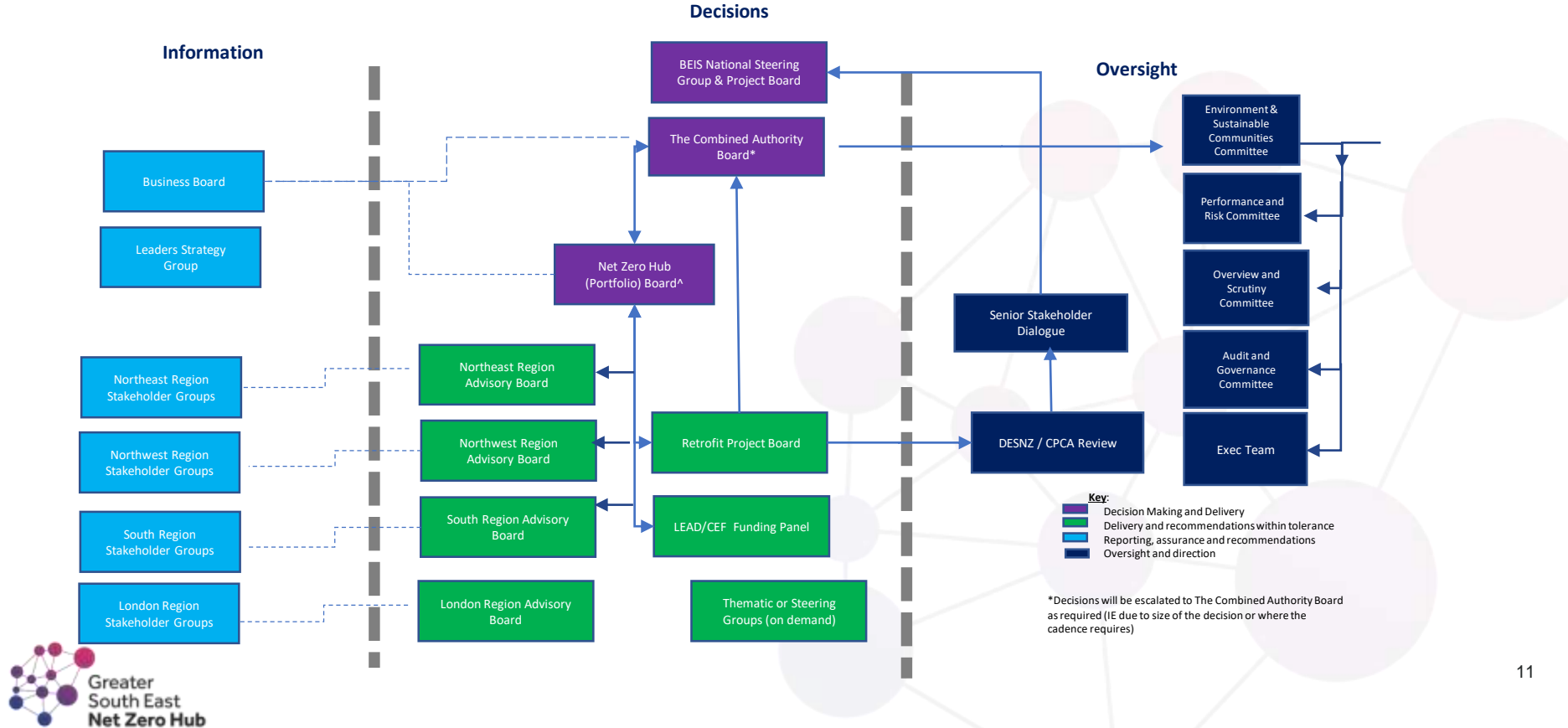
- The Hub Board will provide oversight of appointment to the RABs (membership of the Hub Board does not preclude joining or being a Chair / Deputy Chair of a RAB).
  - We are seeking Expressions of Interest for consideration, summarising how the individual meets the requirement of the Role Profile, and which Geography and Sector(s) they can represent.
  - Our deadline for EoIs is the 21<sup>st</sup> May
  - Hub Board meeting 4<sup>th</sup> June
  - RAB member induction/workshops will take place in June
  - The first RAB meetings will commence in September

Please see Expression of Interest to apply



# Governance Structure

# Governance Structure





# Greater South East Net Zero Hub



Department for  
Energy Security  
& Net Zero



GREAT  
LONDON  
AUTHORITY



Buckinghamshire  
LOCAL ENTERPRISE  
PARTNERSHIP

NEWANGLIA  
Local Enterprise Partnership  
for Norfolk and Suffolk



Coast to  
Capital



enterprise**m3**  
Delivering prosperity through innovation

SEMLEP  
South East Midlands  
Local Enterprise Partnership